



Session V

Adapting the SMEPI to the Central American Context

Past Meetings



Documento base:

[Estudio de actualización del Índice de Políticas Públicas para Pymes en América Latina y el Caribe \(IPPPALC\)](#)

Past Meetings



SISTEMA ECONÓMICO
LATINOAMERICANO
Y DEL CARIBE



OCDE
MEJORES POLÍTICAS
PARA UNA VIDA MEJOR



ampyme
AUTORIDAD DE LA MICRO,
PEQUEÑA Y MEDIANA EMPRESA

**“Taller de Implementación del Índice de Políticas Públicas para Mipymes
en América Latina y el Caribe (IPPALC)”**

Ciudad de Panamá, Panamá, 20 y 21 de septiembre de 2016

Meeting follow-up

- Final Workshop Statement and Agreement
- Receive letters of interest from pilot countries (*Belize, Costa Rica, Dominican Republic, El Salvador, Guatemala, Panama*)
- Form regional groups
- Identify lead institution in each country
- Establish a partnership among international and regional institutions concerning roles and financing

The Project in a Snapshot

The main objective of the project is to support Latin American and Caribbean (LAC) countries to harness micro, small and medium enterprises (SMEs) as a force for regional integration, productive transformation, and inclusive productivity growth.

Pilot project timeframe: Two-year initiative (Jan 2017- Dec 2018), encompassing a number of 12-18 month sub-projects

Pilot project configuration: Four sub-projects:

1. **Pacific Alliance** (Chile, Colombia, Mexico, Peru)
2. **South America** (Argentina, Ecuador , Uruguay)
3. **Central America** (CENPROMYPE)
4. **Caribbean** (CARICOM member states)

The **OECD** will partner with a variety of regional organisations, including **SELA**, **ECLAC**, **IDB**, **CAF**, **CENPROMYPE**, and **CARICOM**, to implement the project, as well as rely on expertise from other OECD directorates and bodies.

Overall Snapshot

4 sub-projects

Pacific Alliance



South America



Central America



Caribbean



Timeline: 2017-2019

March 2017-mid 2018

March 2017-mid 2018

September 2018– Dec 2019

Capacity Building Workshop and Technical Assistance: 2018

SME Policy Index Assessment: mid 2019- 2020

1 Group of Experts

Latin American and Caribbean Economic System (SELA)



Development Bank of Latin America (CAF)



UN Economic Commission for Latin America and the Caribbean (ECLAC)



Inter-American Development Bank (IDB)



Necessary Conditions for Pilot Project Implementation

- A group of countries sharing the same broad views on SME policy and pursuing common policy goals defined by regional strategy, policy declaration, SME principles, etc.;
- A leading government institution in each country eager to lead the process and able to secure the support of other institutions and key stake holders;
- A partnership among international and regional organisations ready to contribute to the process;
- Availability of key SME statistics and openness by government institutions to provide data and information;
- Possibility to raise adequate funding.

Dimensions for Pilot IPPALC Assessment

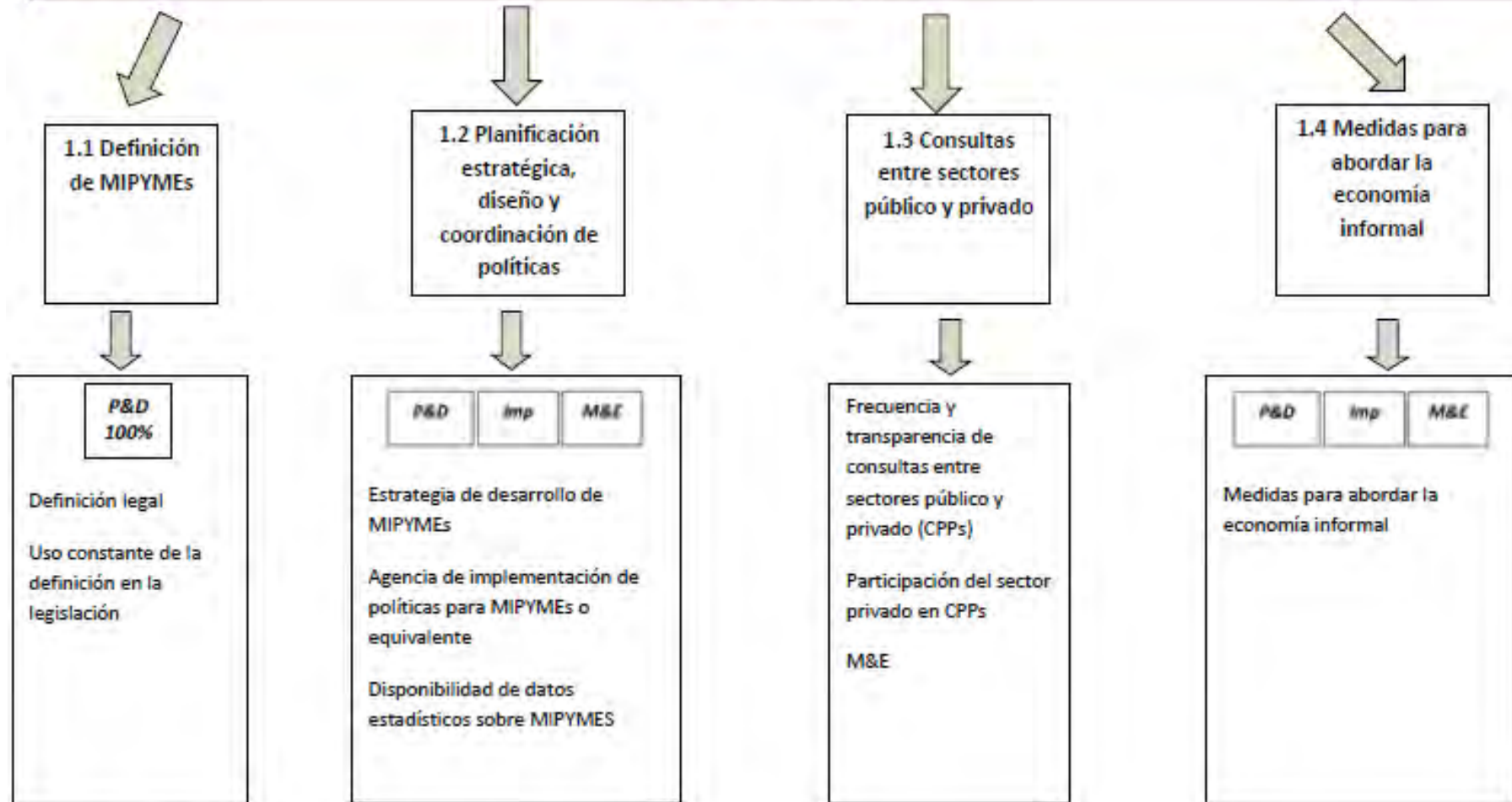
PROPOSED IPPALC DIMENSIONS

- 1. Institutional Framework**
- 2. Operational Environment
/Simplification of Procedures**
- 3. Access to Finance**
- 4. MSME Development Services
and Public Procurement**
- 5. Innovation, and Technology**
- 6. Productive Transformation**
- 7. Access to Market and
Internationalisation of MSMEs**

Dimensions covered by the SME PI

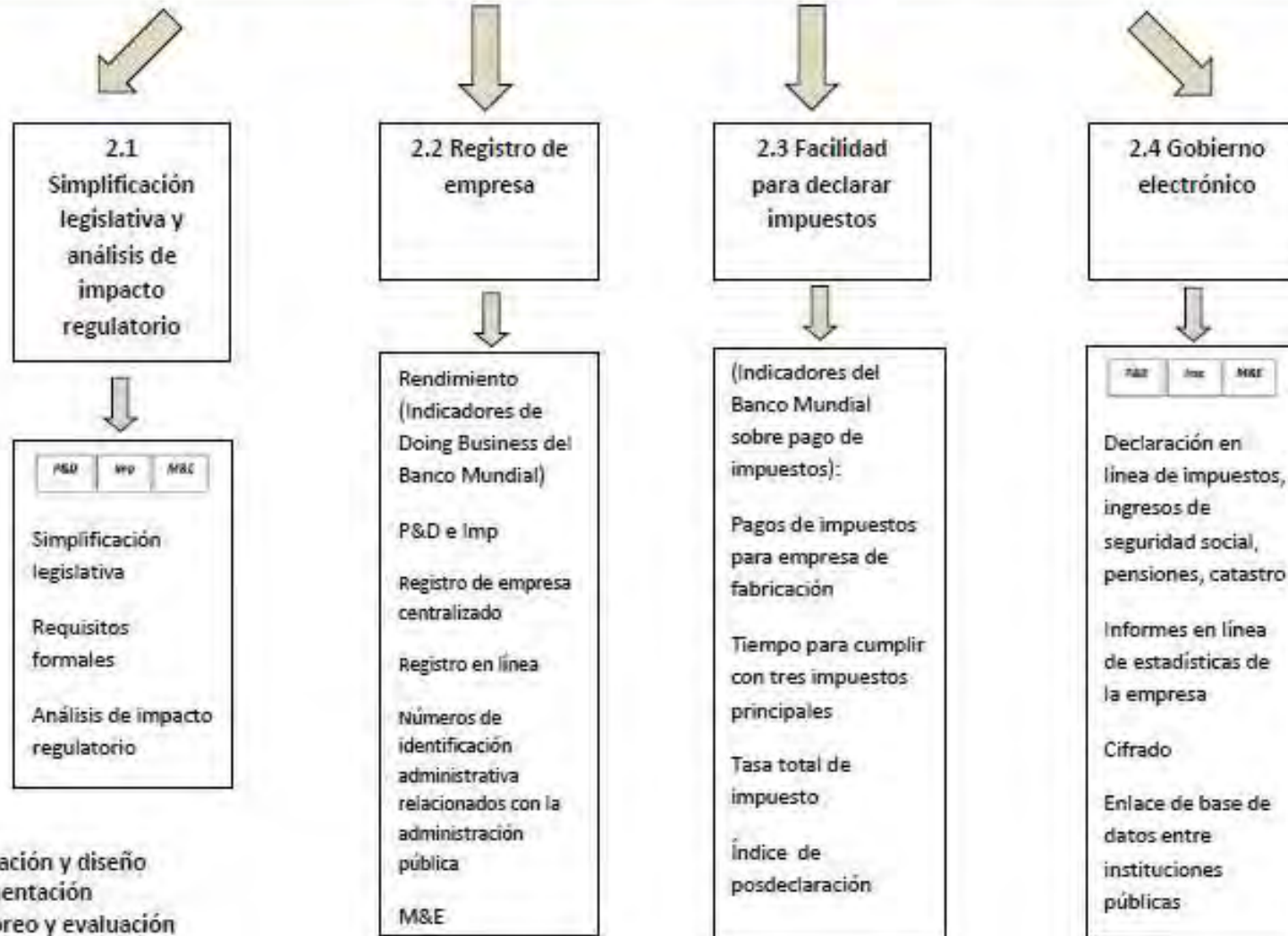
Dimension	Western Balkans and Turkey	Eastern Partner Countries	Mediterranean Middle East and North Africa	ASEAN	Latin America
Entrepreneurial learning and women's entrepreneurship	•	•	•	•	
Bankruptcy and second chance for SMEs	•	•	•		
Institutional and regulatory framework for SME policy making	•	•	•	•	•
Operational environment for SMEs	•	•	•	•	•
Support services for SMEs and start-ups	•	•	•	•	•
Public procurement	•	•	•		
Access to finance for SMEs	•	•	•	•	•
Standards and technical regulations	•	•	•		
Enterprise skills	•	•	•		
Innovation policy for SMEs	•	•	•		•
SMEs in a green economy	•	•	•	•	
Internationalisation of SMEs	•	•	•	•	•
Social and inclusive enterprises				•	
Productivity, technology and innovation				•	
Associativity and productive articulation					•

1. Marco institucional

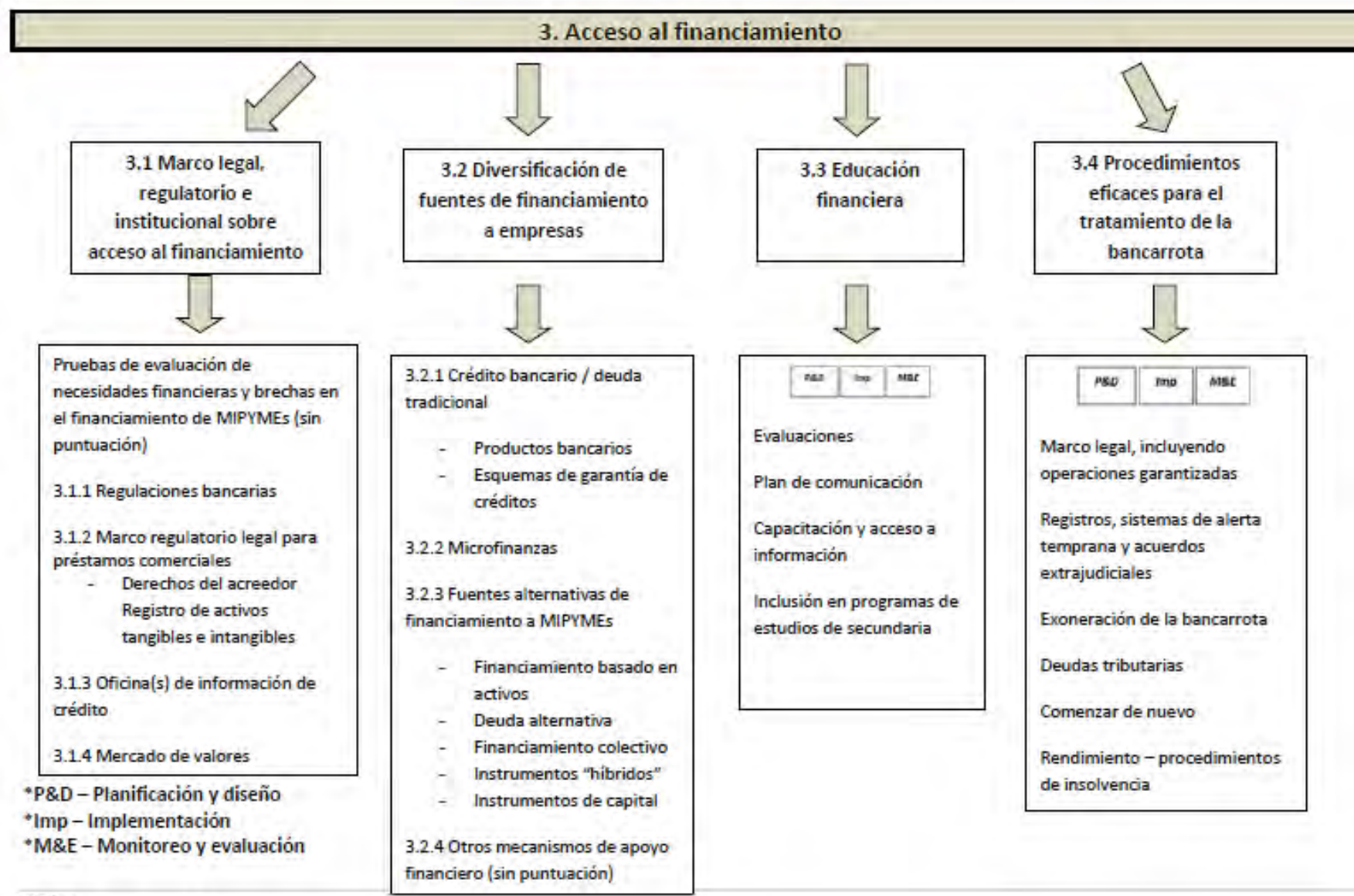


*P&D – Planificación y Diseño
*Imp. – Implementación
*M&E – Monitoreo y Evaluación

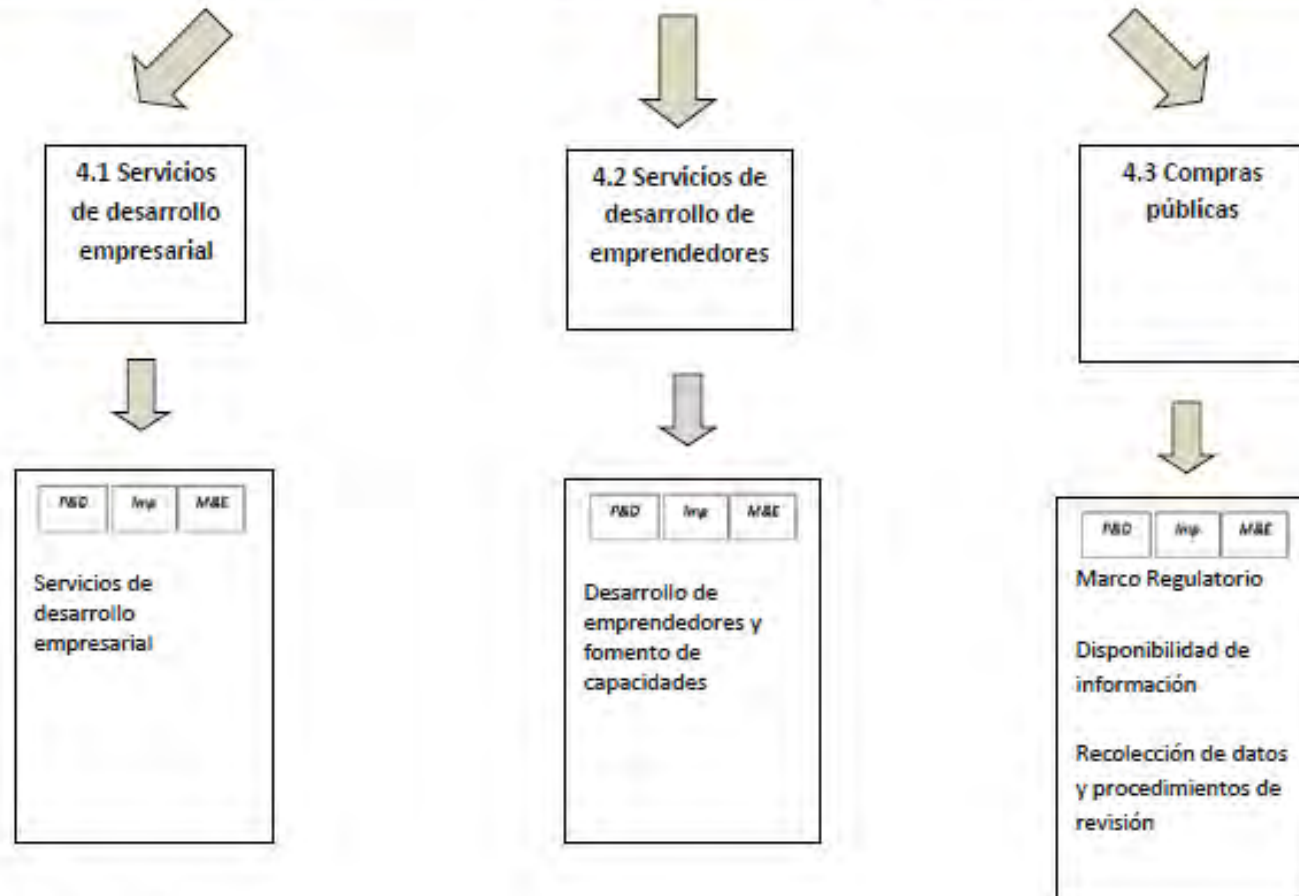
2. Ambiente operativo/simplificación de procedimientos



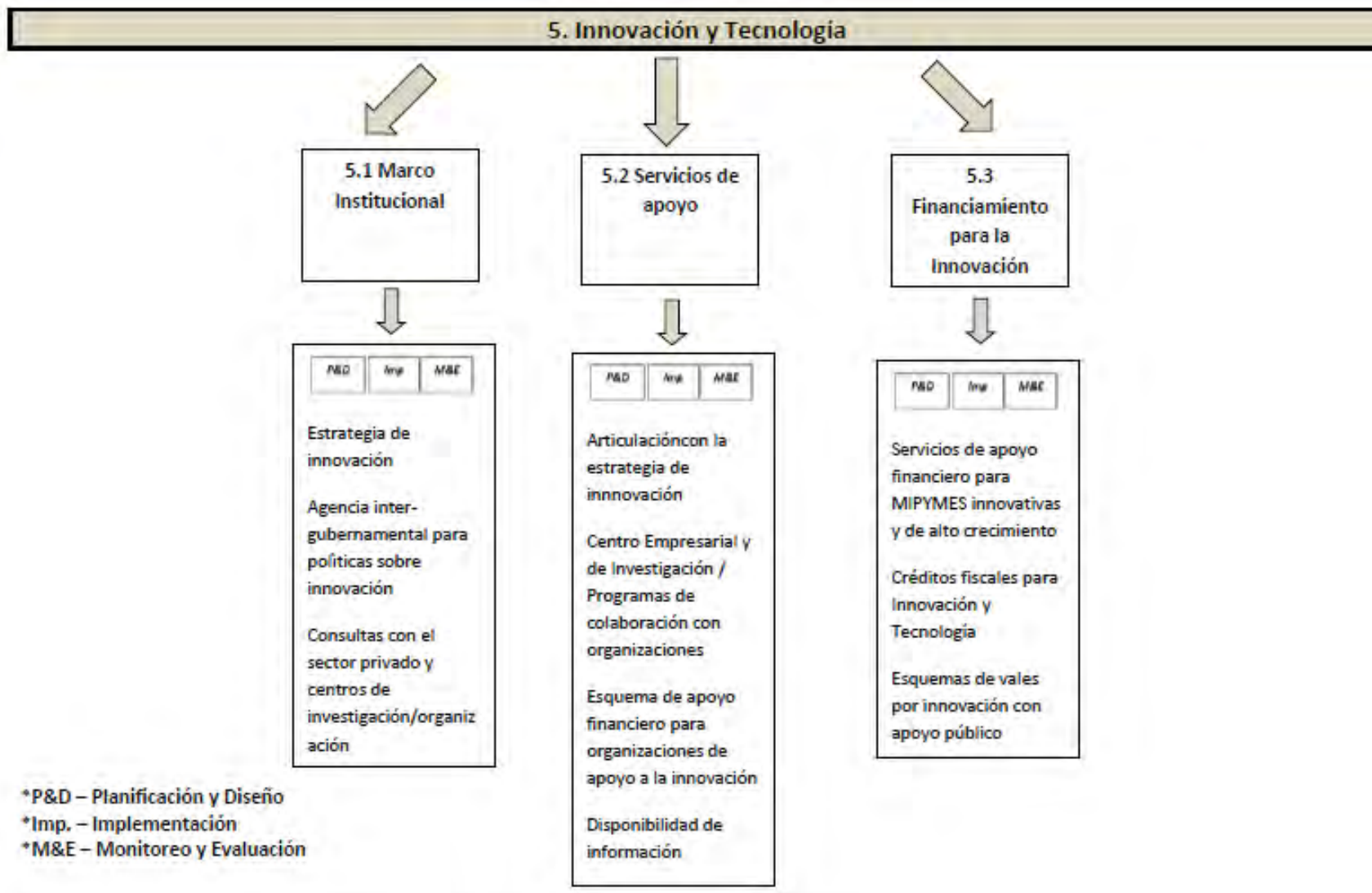
*P&D – Planificación y diseño
 *Imp. – Implementación
 *M&E – Monitoreo y evaluación

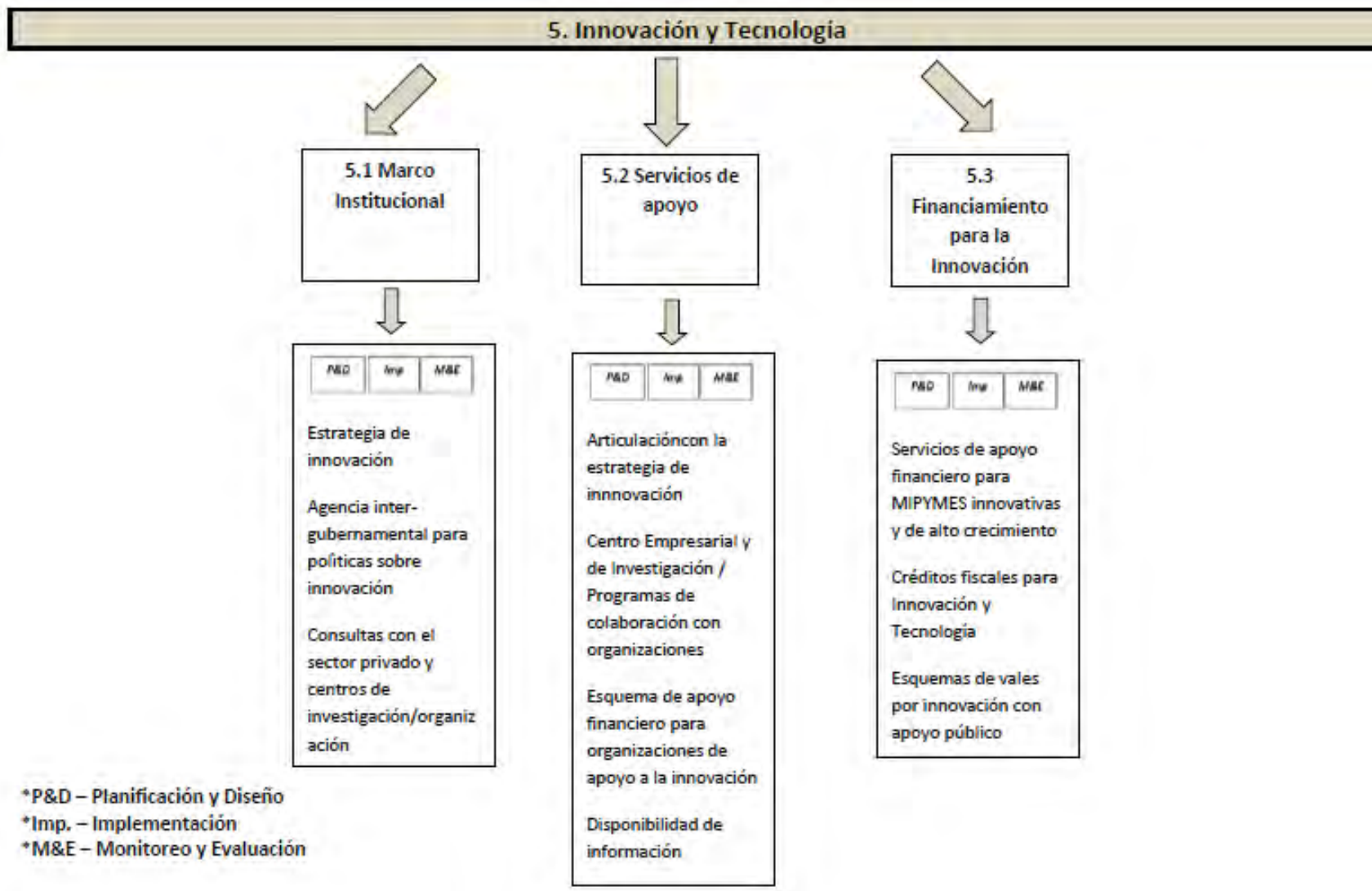


4. Servicios de desarrollo de MIPYMEs y compras públicas

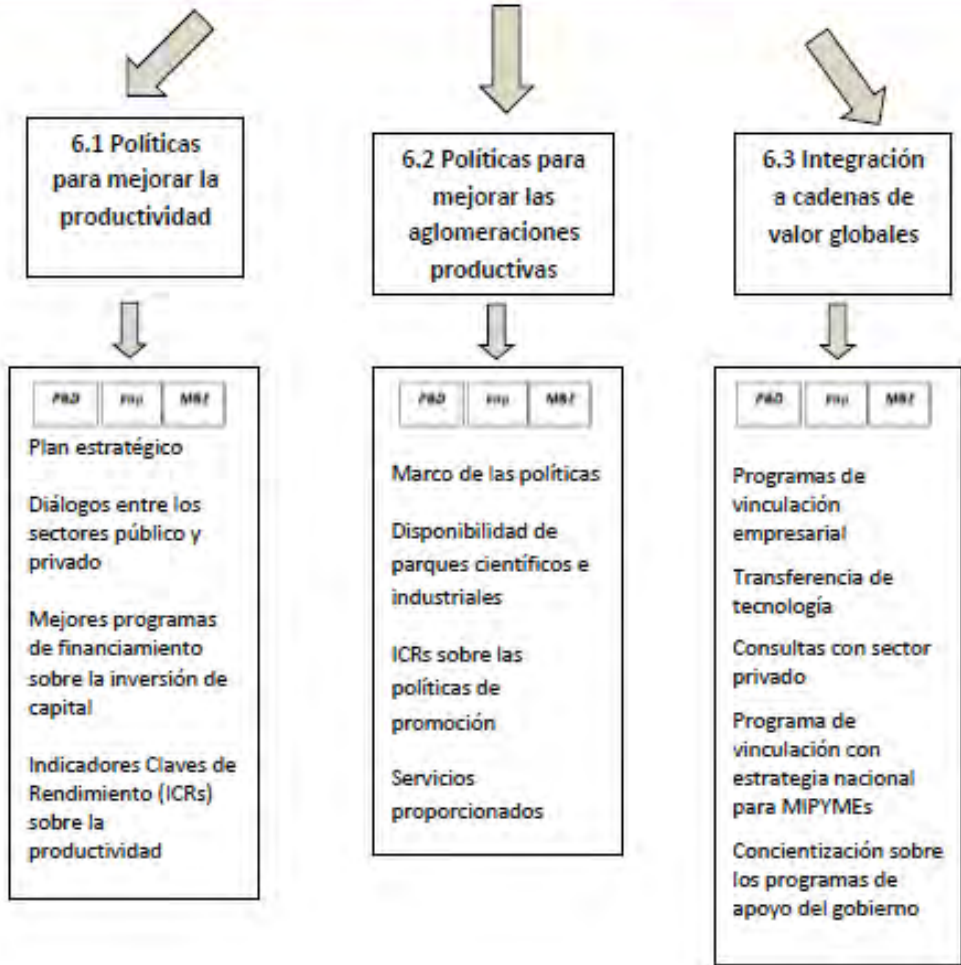


*P&D – Planificación y Diseño
*Imp. – Implementación
*M&E – Monitoreo y Evaluación



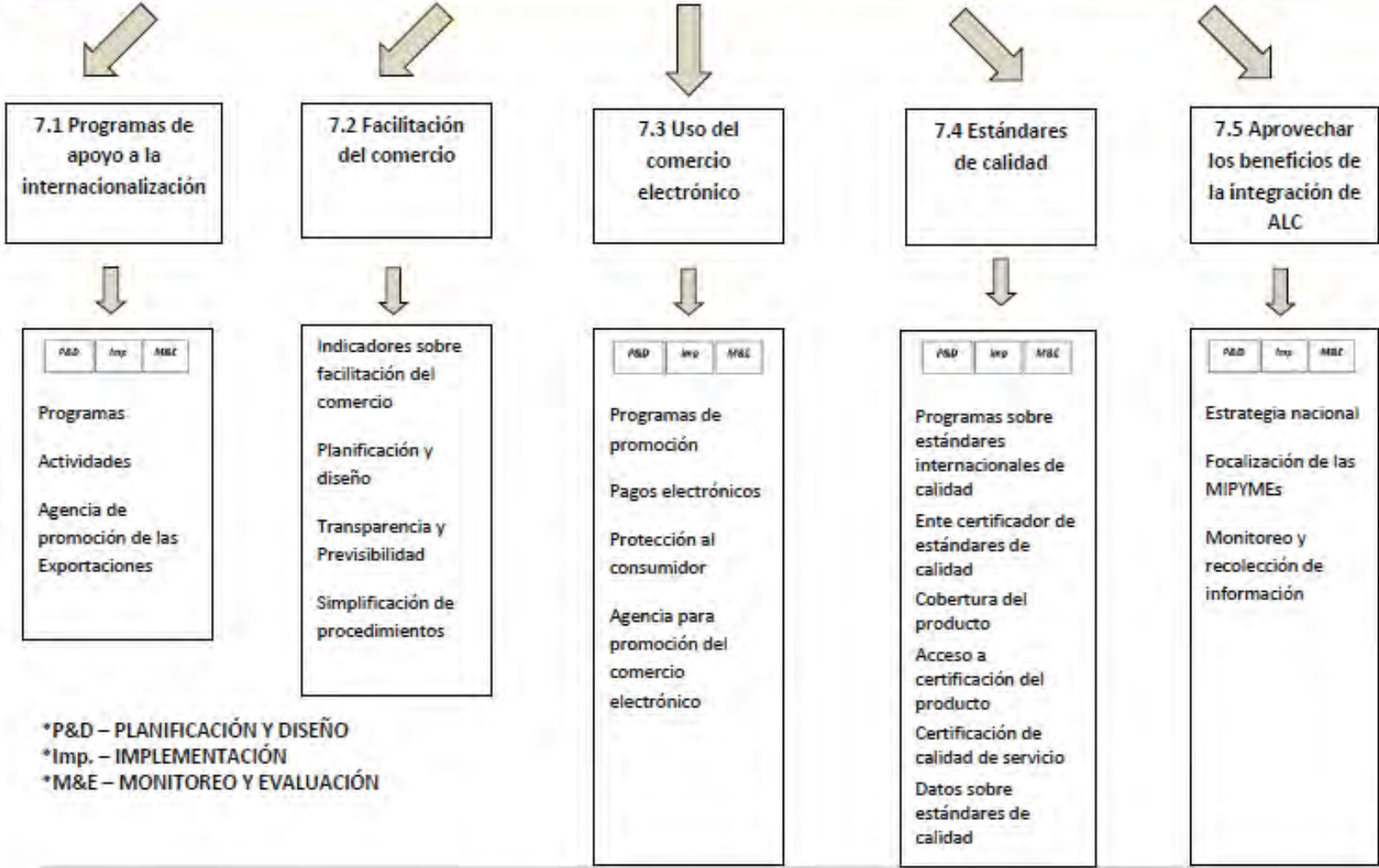


6. Transformación productiva



*P&D – Planificación y Diseño
 *Imp. – Implementación
 *M&E – Monitoreo y Evaluación

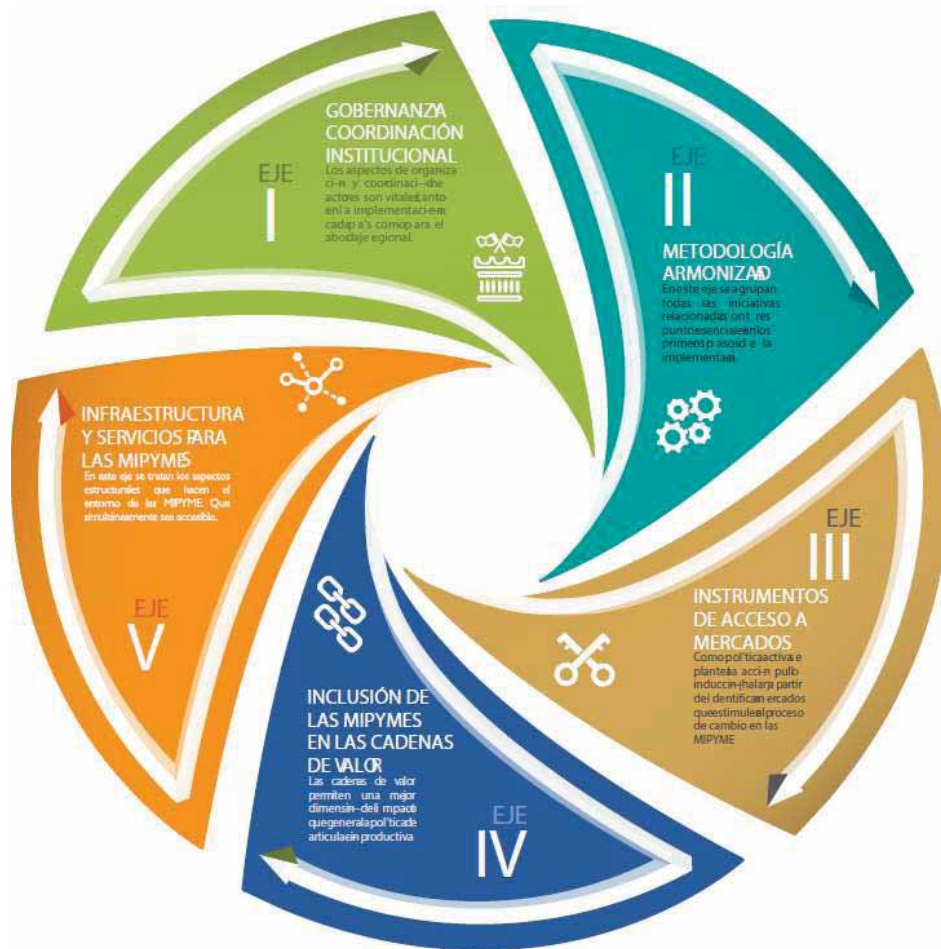
7. Acceso al mercado e internacionalización de las MIPYMEs



Necessary Conditions for Pilot Project Implementation

- **A group of countries sharing the same broad views on SME policy and pursuing common policy goals defined by regional strategy, policy declaration, SME principles, etc.;**
- A leading government institution in each country eager to lead the process and able to secure the support of other institutions and key stake holders;
- A partnership among international and regional organisations ready to contribute to the process;
- Availability of key SME statistics and openness by government institutions to provide data and information;
- Possibility to raise adequate funding.

Questions for Discussion: Central American Context



- How can a SMEPI assessment be developed as a monitoring tool for the implementation of the Estrategia Regional de Articulación Productiva MIPYME?
 - The SMEPI is already a tool for facilitating a harmonized methodology (Eje II)
 - The assessment framework could be aligned to the remaining four areas of the Strategy
- What do you think? Are any other areas missing?

Questions for Discussion: Central American Context



PROPOSED IPPALC DIMENSIONS

1. Institutional Framework
2. Operational Environment /Simplification of Procedures
3. Access to Finance
4. MSME Development Services and Public Procurement
5. Innovation, and Technology
6. Productive Transformation
7. Access to Market and Internationalisation of MSMEs

Questions for Discussion: Central American Context

Dimension	Western Balkans and Turkey	Eastern Partner Countries	Mediterranean Middle East and North Africa	ASEAN	Latin America
Entrepreneurial learning and women's entrepreneurship	•	•	•	•	
Bankruptcy and second chance for SMEs	•	•	•		
Institutional and regulatory framework for SME policy making	•	•	•	•	•
Operational environment for SMEs	•	•	•	•	•
Support services for SMEs and start-ups	•	•	•	•	•
Public procurement	•	•	•		
Access to finance for SMEs	•	•	•	•	•
Standards and technical regulations	•	•	•		
Enterprise skills	•	•	•		
Innovation policy for SMEs	•	•	•		•
SMEs in a green economy	•	•	•	•	
Internationalisation of SMEs	•	•	•	•	•
Social and inclusive enterprises				•	
Productivity, technology and innovation				•	
Associativity and productive articulation					•



Discussion